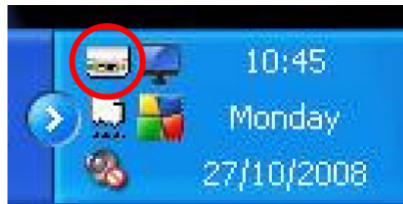
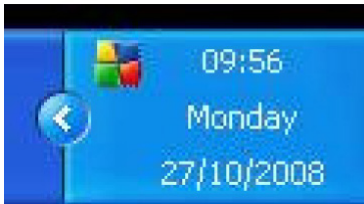




Time & date change instructions for: Alto/Alto Pro

1. Run the Alto terminal control (sometimes known as Alto Hardware controller).
2. If the window will not open
 - a. Look in the area next to the clock on the start bar
 - b. Click on the arrow pointing to the left (See example picture)
 - c. You should then see a small icon that looks like an Alto Clock
3. Select the clock you want to change the date & time from in the list
4. Click on the configuration functions option.
5. Enter your password. The default password is "password" unless it has been changed.
6. Click on the set date and time button. Change the date and time if necessary (it is drawn from your computer's date and time which may be wrong).
7. Now click on OK.
8. The new date and time is set.



All our support personnel are fully trained and based in the UK. As a company we are ISO27001 accredited.

Support benefits

- ✓ UK based support experts
- ✓ Unlimited calls
- ✓ Priority support
- ✓ Peace of mind
- ✓ Online Remote Support

What it covers

- ✓ Troubleshooting
- ✓ Configuration advice
- ✓ Shift/rules set up assistance
- ✓ Transaction queries
- ✓ Reporting issues

To get support

Call us on
01908 281 000



01908 281000
 info@timesystemsuk.com
 www.timesystemsuk.com

Time Systems (UK) Ltd, Systems House,
 Newport Road, Wavendon, Milton Keynes, MK17 8AA